



HELUKABEL®

EMC + earthing in one
with our HT MS-EP5



Cable Accessories

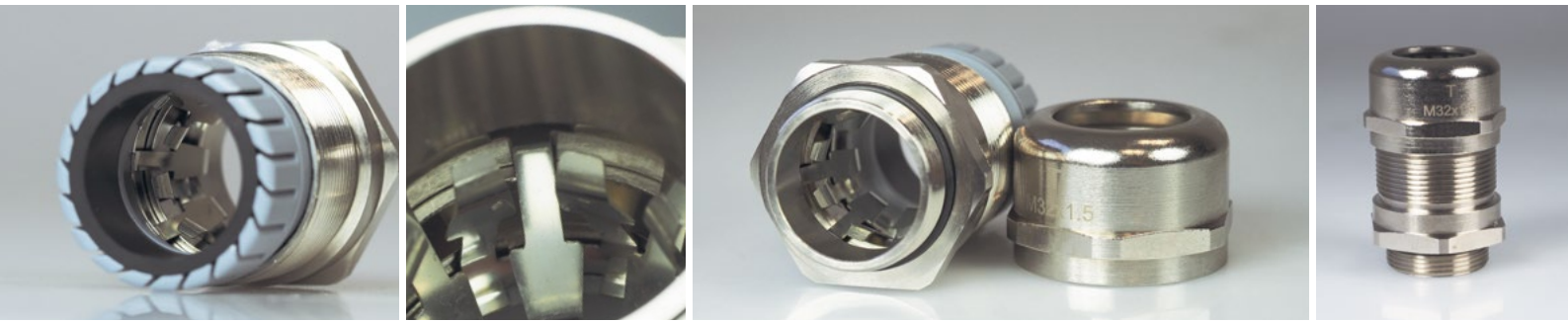
HELUTOP MS-EP5

EMC cable glands for the highest
current-carrying capacity demands

helukabel.com

HELUTOP MS-EP5

HELUTOP MS-EP5



HELUTOP MS-EP5

current diverter and EMC cable gland

Areas of application

- railway engineering
- wind power
- manufacturing facilities

Material

- nickel-plated brass
- contacts: copper-beryllium
- terminal: PA6
- gasket: chloroprene rubber (CR)
- O-ring: NBR (nitrile butadiene rubber)

Technical data

- protection class: IP68 - 5 bar
- temperature range: -40°C to + 100°C
- patented contact system

Advantages of the HT MS-EP5

Maximisation of the number of EMC contacts



- Increase of the total contact area between the cable screen and the cable gland
- Significant improvement in EMC screening at high frequencies

Strengthened EMC contacts



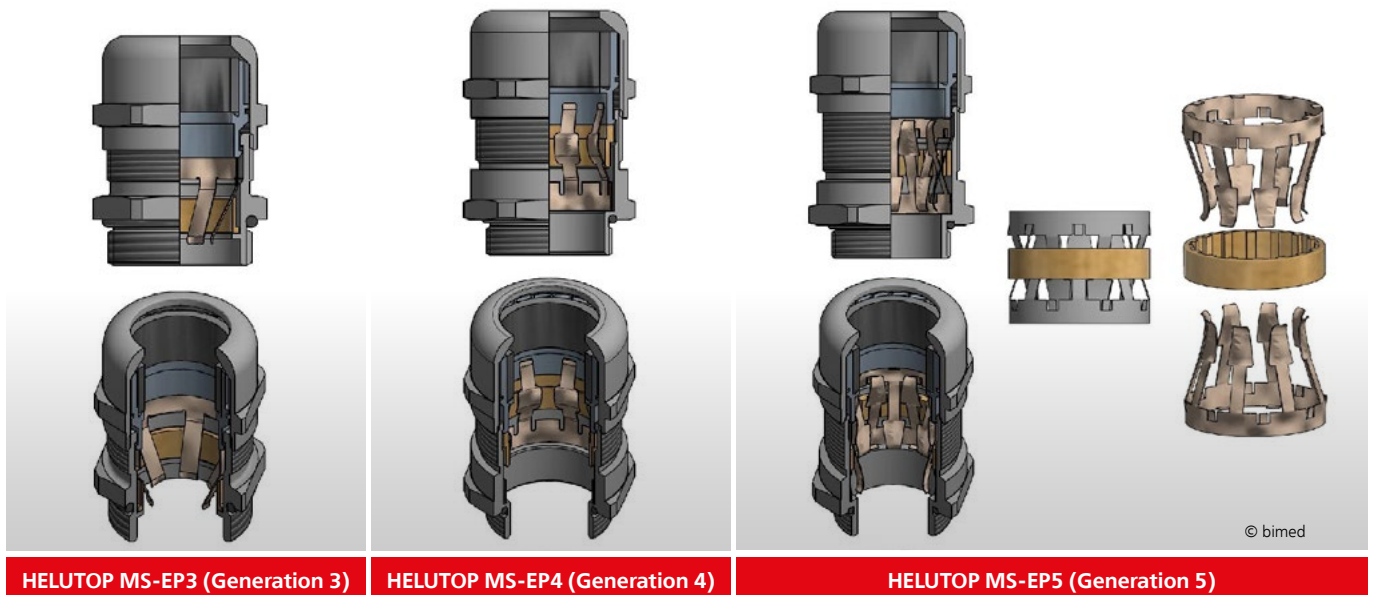
- Reduction in ohmic resistance, voltage drop, and heat loss
- Use in applications with heavy mechanical stress, e.g. strong vibrations

Flexible contact system (=HELUTOP MS-EP4)



- No damage to the screen when inserting and adjusting the cable

Comparison of 3 generations of our HELUTOP EMC cable glands



HELUTOP MS-EP3 (Generation 3)

HELUTOP MS-EP4 (Generation 4)

HELUTOP MS-EP5 (Generation 5)